

## Actuators for safety switches SGA/SGP/STA/STP/STM

- ▶ Two stainless safety screws per actuator
- ▶ Actuators with and without rubber bush

### Note

Type S actuators must not be used in conjunction with insertion funnels.

L actuators must be used for insertion funnels.

### Straight actuator

Suitable for a maximum tensile force of 2500 N for STP, or 3000 N for STA.

The straight actuator is used on sliding doors or hinged doors with door radii greater than 300 mm. Safety screws prevent unscrewing of the actuator.

### Bent actuator

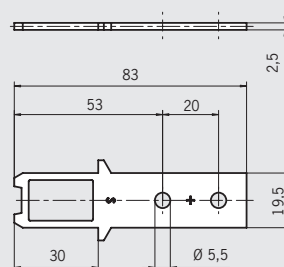
Suitable for a maximum tensile force of 1500 N

### Screws made of stainless steel

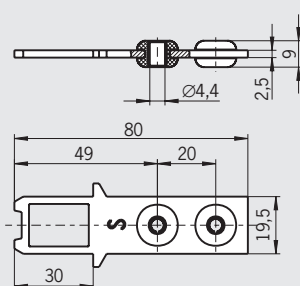
The safety screws included can be inserted with a normal tool, but cannot be removed again.

**Standard actuator S, straight** (Physically compatible with TP actuator P-G)  
Without rubber bush, overtravel 5 mm

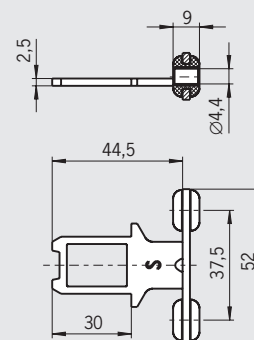
### Dimension drawings



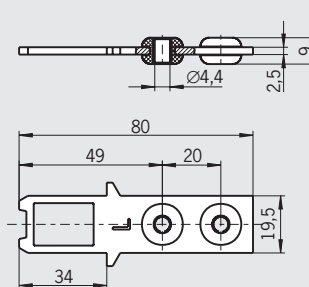
**Standard actuator S, straight**  
With rubber bush, overtravel 5 mm



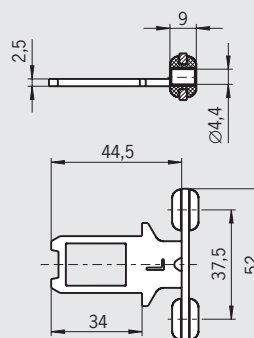
**Standard actuator S, bent**  
With rubber bush, overtravel 5 mm



**Actuator L, straight, for insertion funnel**  
With rubber bush, overtravel 5 mm



**Actuator L, bent, for insertion funnel**  
With rubber bush, overtravel 5 mm



### Ordering table

| Designation            | Version  | Min. door radius r [mm] | Packaging unit | Order no.                              |
|------------------------|--|-------------------------|----------------|--|
| Actuator S<br>Straight | <b>S-G-SN-C2115</b><br>Without rubber bush, overtravel 5 mm<br>incl. 2 safety screws M5 x 10 | 300                     | 1 ea.          | <b>097861</b><br>ACTUATOR S-G-SN-C2115 |
|                        | <b>S-GT-SN</b><br>With rubber bush, overtravel 5 mm<br>incl. 2 safety screws M4 x 14         | 300                     | 1 ea.          | <b>095738</b><br>ACTUATOR S-GT-SN      |
| Actuator S<br>Angled   | <b>S-WQ-SN</b><br>Without rubber bush, overtravel 5 mm<br>incl. 2 safety screws M4 x 14      | 300                     | 1 ea.          | <b>095740</b><br>ACTUATOR S-WQ-SN      |
| Actuator L<br>Straight | <b>S-GT-LN</b><br>With rubber bush, overtravel 5 mm<br>incl. 2 safety screws M4 x 14         | 300                     | 1 ea.          | <b>095739</b><br>ACTUATOR S-GT-LN      |
| Actuator L<br>Angled   | <b>S-WQ-LN</b><br>With rubber bush, overtravel 5 mm<br>incl. 2 safety screws M4 x 14         | 300                     | 1 ea.          | <b>095741</b><br>ACTUATOR S-WQ-LN      |

## Hinged actuators for safety switches SGA/SGP/STA/STP/STM

- ▶ Actuators made of stainless steel
- ▶ Two stainless safety screws per actuator
- ▶ For top and bottom hinged doors
- ▶ For right and left hinged doors

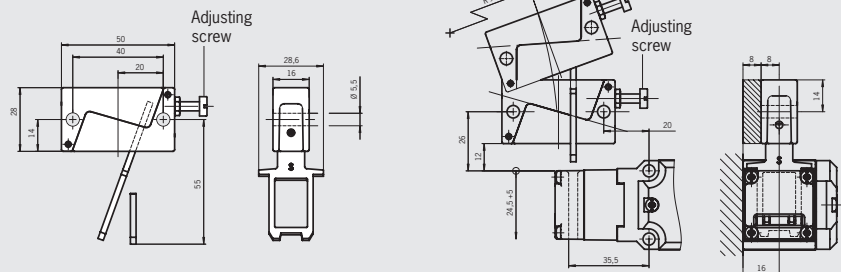
### Hinged actuator

For door radii less than 1000 mm a hinged actuator should be used. The spring action movement of the actuator prevents damage due to the actuator jamming in the actuating head. Depending on the movement of the safety guard, the actuator must be selected for left/right or top/bottom.

### Hinged actuator S-OU-SN

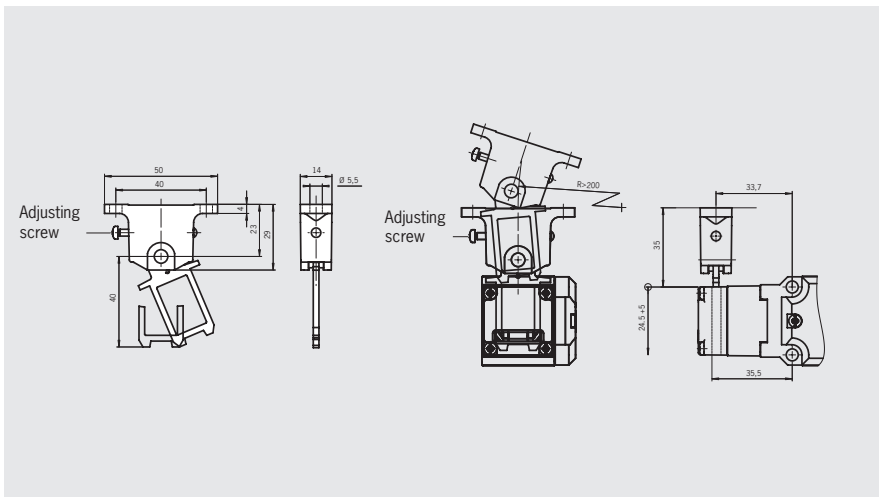
Safety guard hinged at top/bottom, overtravel 5 mm

#### Dimension drawings



### Hinged actuator S-LR-SN

Safety guard hinged on left/right, overtravel 5 mm



### Ordering table

| Designation     | Version   | Min. door radius r [mm] | Packaging unit | Order no.                                |
|-----------------|---|-------------------------|----------------|--|
| Hinged actuator | <b>S-OU-SN</b><br>For top and bottom hinged doors<br>overtravel 5 mm<br>incl. 2 safety screws M5 x 25 | 200                     | 1 ea.          | <b>095315</b><br>HINGED ACTUATOR-S-OU-SN |
|                 | <b>S-LR-SN</b><br>For left and right hinged doors<br>overtravel 5 mm<br>incl. 2 safety screws M5 x 10 | 200                     | 1 ea.          | <b>096838</b><br>HINGED ACTUATOR-S-LR-SN |

For safety precautions see page 149  
 For technical data see page 117

Hinged actuators for safety switches SGA/SGP/STA/STP/STM

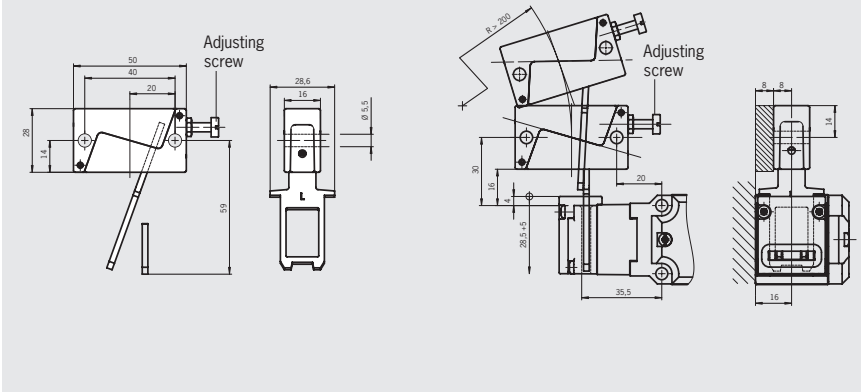
- ▶ Actuators made of stainless steel
- ▶ Two stainless safety screws per actuator
- ▶ For top and bottom hinged doors
- ▶ For right and left hinged doors

Hinged actuator

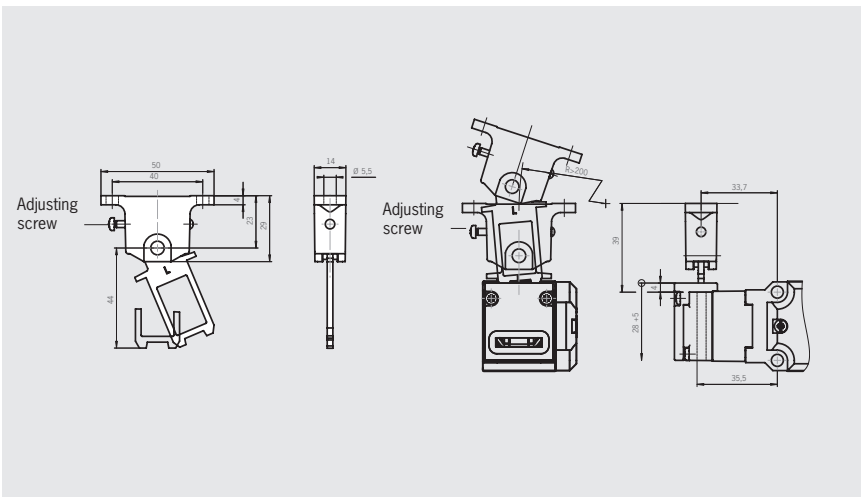
For door radii less than 1000 mm a hinged actuator should be used. The spring action movement of the actuator prevents damage due to the actuator jamming in the actuating head. Depending on the movement of the safety guard, the actuator must be selected for left/right or top/bottom.

Hinged actuator S-OU-LN for insertion funnel  
Safety guard hinged at top/bottom, overtravel 5 mm

Dimension drawings



Hinged actuator S-LR-LN for insertion funnel  
Safety guard hinged on left/right, overtravel 5 mm



Ordering table

| Designation     | Version   | Min. door radius r [mm] | Packaging unit | Order no.                                |
|-----------------|---|-------------------------|----------------|--|
| Hinged actuator | <b>S-OU-LN</b><br>For top and bottom hinged doors<br>overtravel 5 mm<br>incl. 2 safety screws M5 x 25 | 200                     | 1 ea.          | <b>096697</b><br>HINGED ACTUATOR-S-OU-LN |
|                 | <b>S-LR-LN</b><br>For left and right hinged doors<br>overtravel 5 mm<br>incl. 2 safety screws M5 x 10 | 200                     | 1 ea.          | <b>096844</b><br>HINGED ACTUATOR-S-LR-LN |